

## mining engineering

Department of Mining and Geological  
Engineering

azengineering

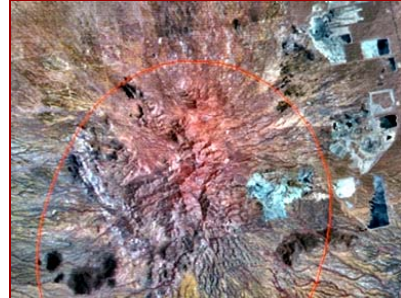
THE UNIVERSITY OF ARIZONA

### faq: why major in mining engineering?

Mining engineers have the broadest engineering background of any engineering degree. Students take courses in all the fundamental engineering subjects. In addition, mining engineers must know a great deal about geology and about business and about people. No two days are the same for a mining engineer. If you like to travel, there are many international opportunities. If you want to live in an urban environment there are jobs for you. If you want to live in a rural community, there are jobs for you too.

### “the demographic earthquake”

Only 110 bachelor's degrees were given to mining engineers in the US last year. The demand for mining engineers is significantly higher than this. The combination of a large number of retirements in the next few years and increased consumption of raw materials in China and other developing countries means that there are plenty of jobs for mining engineers. The shortage of mining engineers is so severe that the US House Subcommittee on Energy and Mineral Resources refers to the problem as an impending “demographic earthquake”. Because so many mining engineers currently in the workforce will be retiring soon, engineers graduating in the next 10 years will be groomed for a fast advance up the career ladder. The shortage is in all sectors of the industry from coal to metals to construction materials, and heavy construction projects. We have 100% job placement and our students receive multiple job offers before graduation. Starting salaries are around \$55,000 per year without bonuses or overtime. Substantial scholarship support is available. **There is no better time to major in mining engineering than today!**



#### mne contacts

Mary M. Poulton, Department Head  
520 621 8391  
mpoulton@email.arizona.edu

Olivia Hanson,  
Administrative Associate  
520 621 6063  
mgedept@email.arizona.edu



Department of Mining and  
Geological Engineering  
1235 E. James E. Rogers Way  
P.O. Box 210012  
Tucson, AZ 85721-0012  
<http://www.mge.arizona.edu>